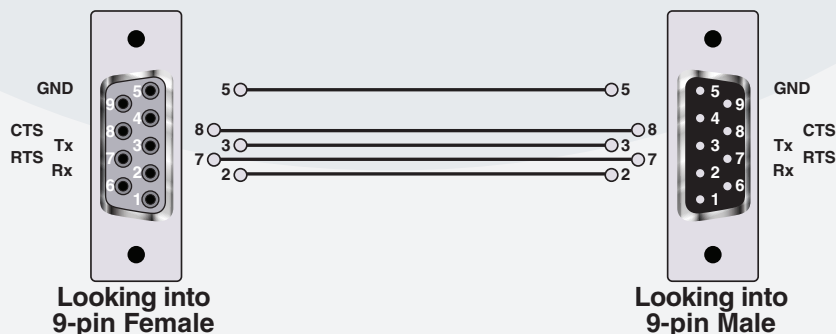


External Control Protocol Addendum: Zone Mix 760 Crestron Modules



Symetrix Zone Mix 760 Crestron Modules	
General Information.	
Module Name:	Symetrix Zone Mix 760.
Category:	Mixer/Digital Signal Processor.
Summary:	This module is made to work over IP or RS-232 offering Input, Output, Zone, and paging control of the Symetrix Zone Mix 760 with real-time feedback.
Notes:	<p>The Zone Mix 760 will only send feedback to one UDP connection at a time, therefore the UDP modules will behave differently in Simpl windows versus System Builder. In Simpl, use one UDP connection symbol for all modules. In System builder, only enable one module at a time by using the enable input, the SystemBuilder demo illustrates this.</p> <p>The UDP Enable input is required for these modules to have real-time feedback. If not enabled, the module will still control the device, however, real-time feedback will not be achieved. The device is polled for current values every time the module is enabled.</p> <p>Serial modules work like most serial device modules and need no special care in programming.</p> <p>This module will offer control of the Symetrix Zone Mix 760 with real-time feedback. This module will auto connect in SystemBuilder. In Simpl Windows, you can right-click and drag the module on top of the UDP/IP communications symbol for auto connect logic. Only one UDP device is required for communications to the same device. It is recommended to use the UDP enable in the programming. It can be left on, however it is recommended to only enable it during system operation. Leaving multiple UDP/IP devices connected can cause system lag and potentially cause freezing.</p>
Supported Hardware:	All 2-series processors only.
Supported Software:	Simpl Windows, System Builder, Symetrix Zone Mix 760 v2.1 or higher.
Hardware Setup:	57600, 8, N, 1 - SW Handshake = Off for RS-232, Port 48630 for UDP/IP.
Cable:	DB9F to DB9M, straight through for RS-232, Cat 5/5e/6 for UDP/IP.



Programming and Testing	
Hardware:	QM-RMC v3.155.1244 , Pro2 v3.155.1240 , CNMSX-Pro v5.14.02 , TPMC-8X v1.00.41, Symetrix Zone Mix 760.
Software:	Simpl Windows 2.08.41 & SystemBuilder 3.3.15, DB-18.8.8, LIB-487, Symetrix Zone Mix 760 v2.10.

Symetrix Zone Mix 760 Volume and Mute Control

Programming.

FUNCTION	DESCRIPTION
Inputs	
Volume Up/Down	Pulse or hold to raise or lower volume level of respective input or output.
Slider Input	Route from slider on touch panel to respective channel if desired.
Mute On/Off	Pulse to turn mute "on" or "off".
Mute Toggle	Pulse to toggle mute "on" or "off".
UDP Enable	Set high to enable UDP communications. Typical connection takes 250 ms, can be up to 2 sec. depending on network traffic. Each time this is set high, device is polled for current levels. Added for SystemBuilder programming support.
device_rx\$	Route from rx\$ of UDP/IP Communications Module.
Outputs	
Volume Bar	Current volume level in %. Route to volume bar, percent, or slider.
Volume_dB\$	Current volume in dB. Route to indirect text field.
Mute On/Off FB	Current state of Mute remains high.
enable_comm	Route to enable on UDP/IP communications device (auto connects in System Builder).
device_tx\$	Route to tx\$ of UDP/IP Communication Module.
Parameters	
Ramp Time	Use this to set the ramp time from 0 to 100%.
Slider Ramp Time	Use this to set the response of the Slider. 0 s will give you real time changes, while greater values will produce a ramp effect.

Symetrix Zone Mix 760 Paging Control

Programming.

FUNCTION	DESCRIPTION
Inputs	
Page Source	Use Analog Initialize to select which input to use for paging. Valid values are 0d-12d. 0d will select "none".
Page Push to Talk	Pulse to toggle push to talk on respective station "On" and "Off".
Page Zone	Pulse respective page station and zone to toggle "On" and "Off".
UDP Enable	Set high to enable UDP communications. Typical connection takes 250 ms, can be up to 2 sec. depending on network traffic. Each time this is set high, the device is polled for current levels. Added for SystemBuilder programming support.
device_rx\$	Route from rx\$ of UDP/IP Communications Module.
Outputs	
Page Source Fb	Current source for respective paging station.
Page Push to Talk Fb	Feedback of respective push to talk function, stays high for as long as it is enabled.
Page Zone Fb	Feedback of respective page zone function, stays high for as long as it is enabled.
enable_comm	Route to enable on UDP/IP communications device (auto connects in System Builder).
device_tx\$	Route to tx\$ of UDP/IP Communication Module.



6408 216th St. SW | Mountlake Terrace, WA 98043 | USA | Tel: +1 (425) 778.7728 | Fax: +1 (425) 778.7727

Engineered by **Symetrix™**

External Control Protocol Addendum: Symetrix Zone Mix 760 Crestron Modules

© 2008 Symetrix, Inc. All rights reserved. Printed in the United States of America. The information in this document is subject to change without notice. Symetrix, Inc. shall not be liable for technical or editorial errors or omissions contained herein; nor is it liable for incidental or consequential damages resulting from the furnishing, performance, or use of this material. Mention of third-party products is for informational purposes only and constitutes neither an endorsement nor a recommendation. Symetrix assumes no responsibility with regard to the performance or use of these products. Under copyright laws, no part of this brochure may be reproduced or transmitted in any form or by any means, electronic or mechanical, without permission in writing from Symetrix, Inc. If, however, your only means of access is electronic, permission to print one copy is hereby granted. The following are either Trademarks or Registered Trademarks of Symetrix, Inc.: Symetrix, SymNet, SymNet Designer, SymLink and CobraLink. Windows is a Registered Trademark of Microsoft, Inc. Other product names mentioned herein may be trademarks and/or registered trademarks of other companies and are property of their respective owners.