

## Audio System Requirements

1. Multimedia capabilities along with consistent volume level output for parade performance.
2. Microphone automixing with priority selection.
3. Speech processing for each microphone including EQ and automatic feedback elimination.
4. Comprehensive loudspeaker management to include EQ, limiting, high and low pass filters, delay, and mute.
5. Remote volume and mute control for float driver.
6. Remote CD player and media player control for float driver.
7. 24v powered audio system.

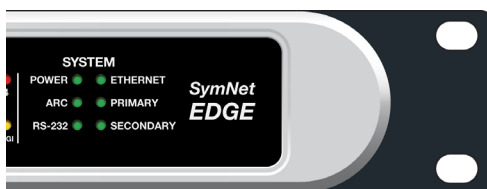
## Symetrix Components

Qty	Description	Notes
1	Edge	DSP frame with 4 I/O expander card slots, 64x64 Dante (uses Dante™ network for expansion).
2	Analog Input Card	4 channel analog mic/line input card.
2	Analog Output Card	4 channel line output card.
1	ARC-3	Capacitive touch wall panel controller with graphic display.
2	ARC-SW4e	Programmable 4 push-button wall panel.
1	Composer	Windows software - design & configure system.

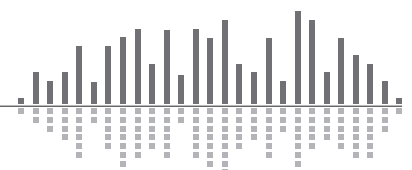
## Solution Overview

Requirement	Notes
Multimedia Input	CD and media players are connected to an analog input card installed into the Edge. Audio is then processed via an AGC (Auto Gain Control) module to ensure multimedia signal levels are consistent regardless of program material.
Automixing with priority	Each group of inputs are routed to a gain-sharing automixer. The automixer has individual channel faders and a master. Each individual channel can be set to either manual or auto mix mode. Channels also include priority level adjustments. Input groups include: microphones, CD player, and media player.
Speech processing	Each microphone is connected to an analog input card installed into the Edge, and will be routed through a high pass filter, EQ, and feedback fighter. Each input can be routed to any output via a matrix mixer.
Loudspeaker management	Each output is programmed using Composer to include EQ, compressor, limiter, and delay modules.
Remote volume and mute control	An ARC-3 is installed at the drivers location.
Remote CD and media player control	Two ARC-SW4e's are installed at the drivers location to control play, next track, pause, and stop functions. Each button triggers a string output control command that is sent to the cd or media player.
24v powered audio system	Edge aux power accepts 24 VDC / 2.0 Amp auxiliary power source.

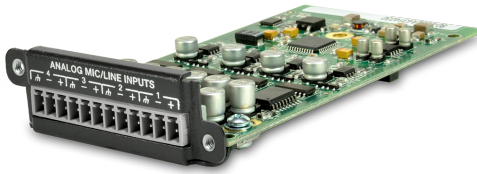
## Digital Signal Processor - Edge



- 4 configurable I/O card slots DSP, 64x64 Dante™.
- On-board 10/100 and gigabit switches.
- Aux power accepts 24 VDC.
- Industry leading audio performance specifications.

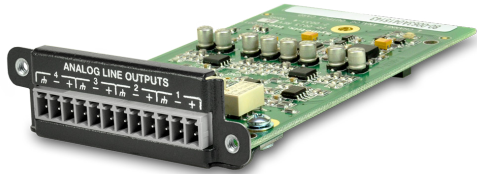


### Input I/O Expansion Card - 4 Channel Analog Input Card



- 4 mic and/or line level inputs.
- +48v phantom power @10mA.
- Programmed using Composer.
- Industry leading audio performance specifications.

### Output I/O Expansion Card - 4 Channel Analog Output Card



- 4 analog balanced line outputs.
- +24 dB max output.
- Programmed using Composer.
- Industry leading audio performance specifications.

### Menu-driven Wall Panel Controller - ARC-3



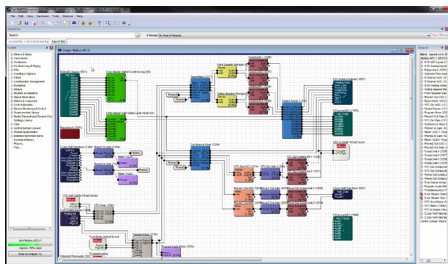
- 32 menus, each with up to 32 items for controlling basic audio functions or complex logic-based events including volume, preset and source selection, room combining and more.
- Bright, crisp 256x64 pixel OLED display is graphic and multi-lingual capable.
- Capacitive touch user interface with LED side lighting provides instant operational feedback.
- Universal mounting options. Surface mount box and flush mount adapter flange included.

### Push-button Wall Panel Controller - ARC-SW4e

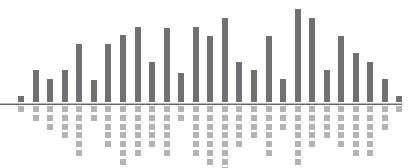


- Modular user wall panel with four buttons that are programmed as momentary, latched or radio.
- Well-suited for control of mute, source selection, and presets.
- Tri-color LEDs provide user feedback. LEDs and buttons may be linked programmed independently.

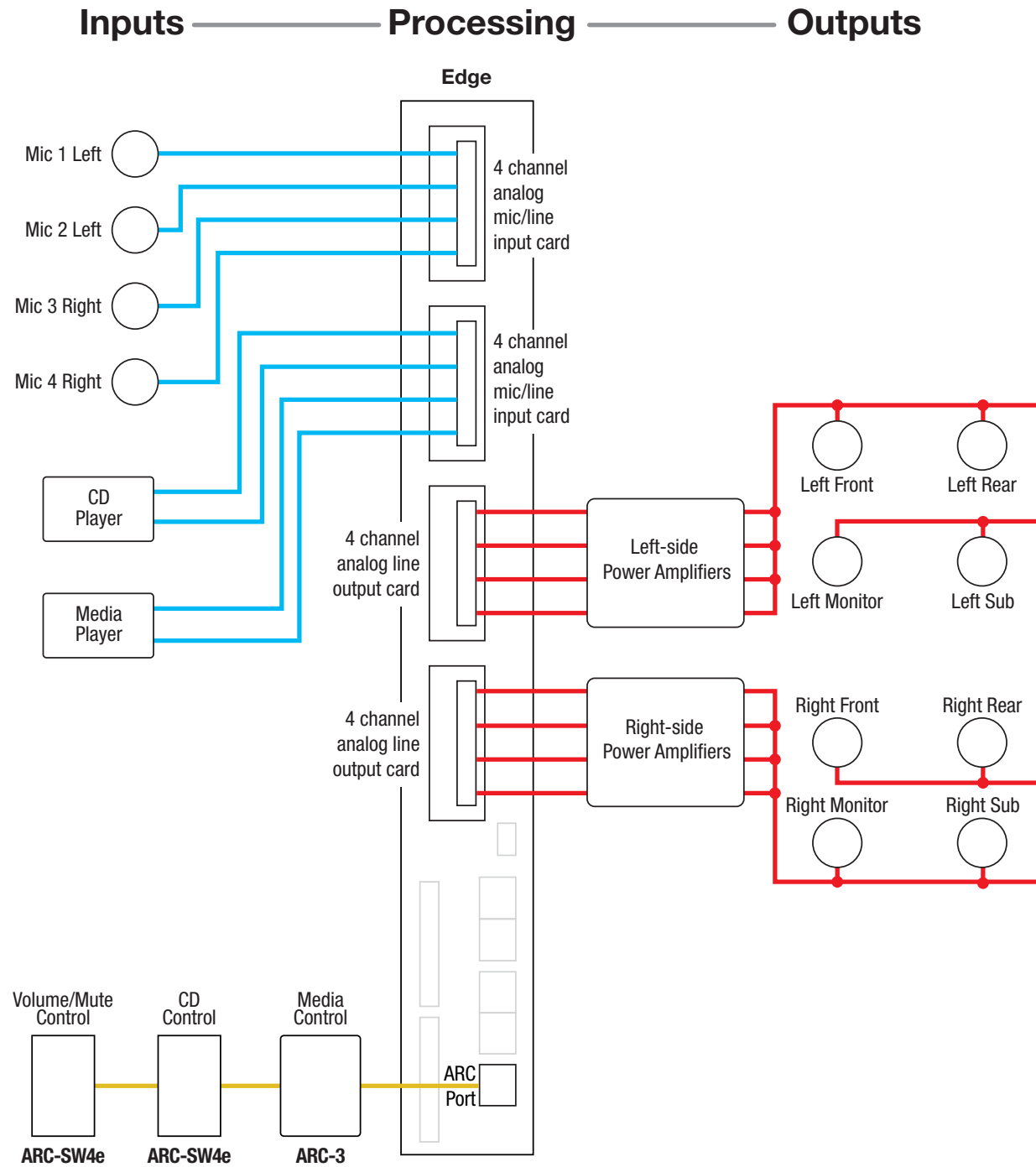
### Windows Design Program - Composer



- Composer is an award winning CAD program used to create site file designs perfectly suited to each and every application.
- Management of all aspects of audio routing, processing, mixing, user control and security for Edge, Radius, and Prism series DSP's and accessories.
- Native configuration and control of select Dante™ third-party endpoints.
- Over 600 DSP modules and dozens of control and logic modules.



### System Hookup Diagram



### Downloads and Links

[Parade Float - Composer Site File](#)

[Parade Float - System Hookup Diagram](#)

[Questions? / Comments? - Symetrix Tech Support](#)

