

Jupiter Software v.1.2.1.15: Apps and Features

The most current version of Jupiter software is available for immediate download at: www.symetrix.co.

Apps

Jupiter Software v.1.2.1.15 adds 15 new apps including:

- Home Theater 1: Precision 5.1 loudspeaker management with subwoofer management.
- Home Theater 2: Precision multichannel loudspeaker management.
- Priority Zone Mixer 1: Multi-zone priority mixer.
- Retail SPL 1: Automatic volume level controller.
- Sound Reinforcement 11: Multi-source mono or stereo selection routed to processed direct outputs.
- Stereo SPL 1: Automatic level adjustment for multiple stereo sources based upon ambient noise levels.

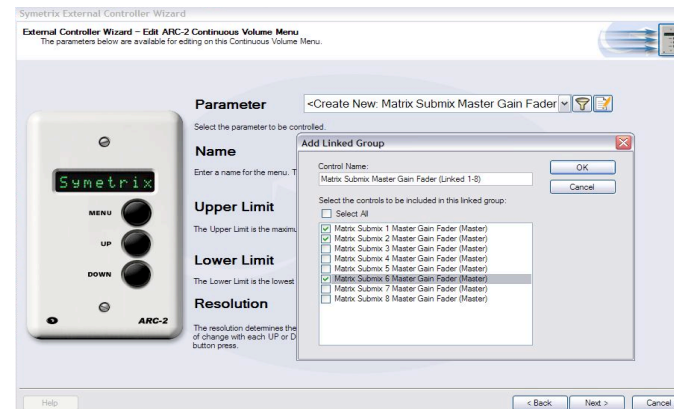
With over 60 apps available for free download, the Jupiter App Finder is now on the website at www.symetrix.co/products/jupiter-app-based-turn-key-dsp/apps. Users can browse the Jupiter App Finder to download individual apps, preview apps before download, compare apps similarities and differences, as well as find the apps best suited for each unique installation.

External Controller Wizard

In addition to apps, a useful linking feature has been added to the External Controller Wizard in Jupiter Software v.1.2.1.15. A remote can now control multiple linked parameters in arbitrary groups.

To set-up this feature:

1. Run the External Controller Wizard
2. Under the 'Parameter' drop down menu, choose "Create New:_"
3. Click the pencil and paper icon to the right of the drop down menu
4. Check the boxes of the parameters you would like to link
5. Click OK and continue through the External Controller Wizard
6. Download to the ARC remote



For more information about Jupiter or other Symetrix products, contact support@symetrix.co.

