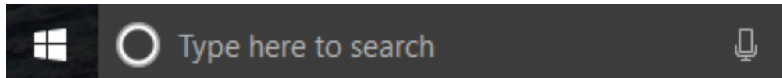


v.10.30

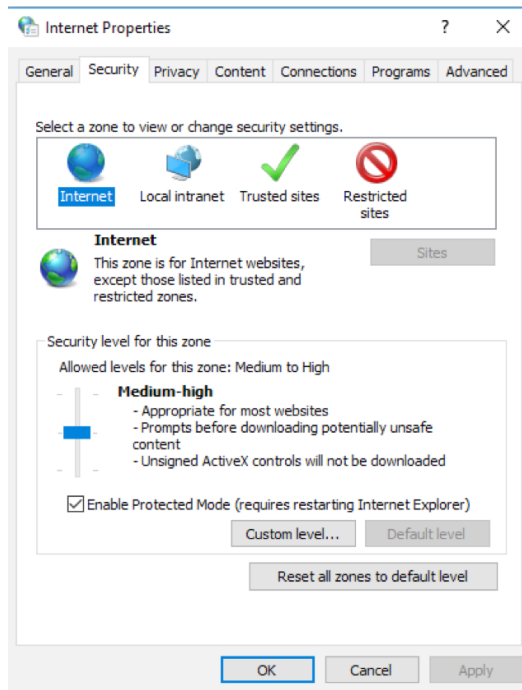
## Control Server and Microsoft Edge Settings

If you are unable to open the Control Server using Microsoft Edge as the browser, please follow these steps:

1. Go to your Windows search feature and type in “Internet Options” and hit Enter.

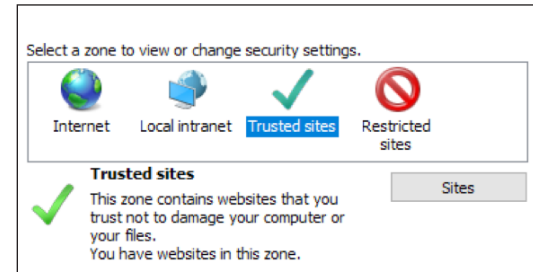


2. Select the Security tab.

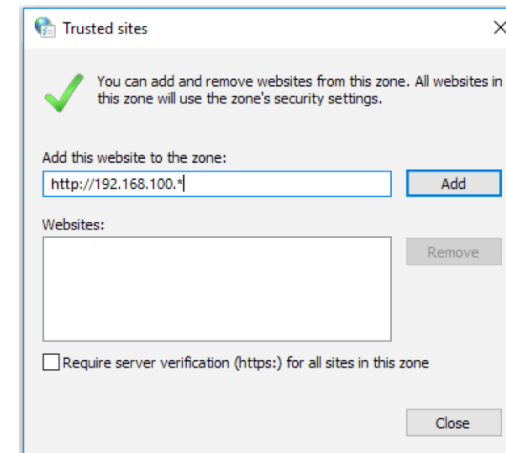


3. Select “Trusted Sites”.

4. Click the “Sites” button.



5. Uncheck the “Require server verification (https:) for all sites in this zone” checkbox.
6. Type the first three octets of your Control Server’s IP address followed by an asterisk into the “Add this website to the zone:” field, then select “Add”. In this example, the IP address of the unit is 192.168.100.2, so we will enter “http://192.168.100.\*”.



7. Select Close to close the Trusted Sites window.
8. Select OK to close the Internet Properties window.
9. Open Edge or restart if the browser is already running.

