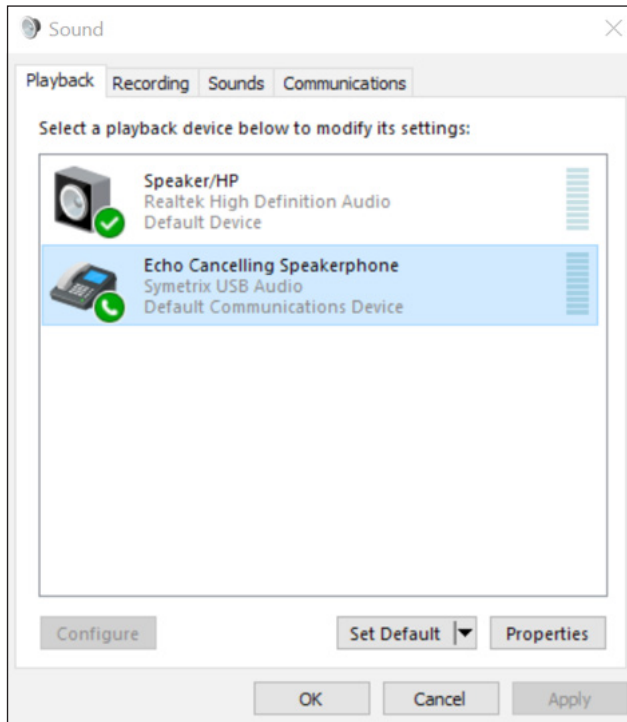


v.10.17

## USB Audio Card Symetrix Driver Windows 1x1 Mode Fix

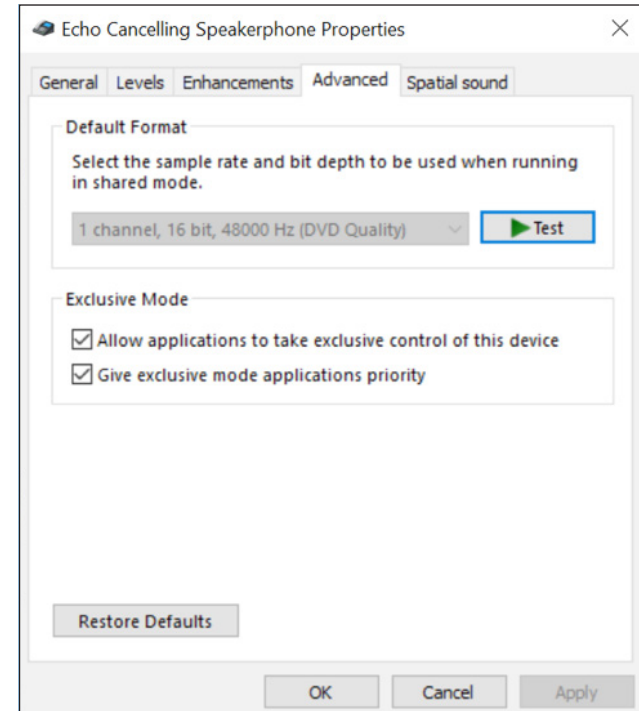
Once you've installed the Symetrix driver (Symetrix USB Audio v4.14.0 Setup) on your Windows machine and configured the USB Audio Card to run in 8x8 mode, switching to 1x1 modes may result in interrupted audio. After you've pushed a 1x1 configuration:

1. Navigate to the Windows Control Panel.
2. Select Sound.



3. On the Playback tab, double-click the Symetrix USB Audio device "Echo Cancelling Speakerphone".

4. Select the Advanced tab.



5. Ensure that "1 channel 16 bit 48000 (DVD Quality)" is selected for the Default Format. If correct, it will be unselectable as the above example shows. If the selection is missing the (DVD Quality) tag, click on the correct option in the dropdown menu.
6. Select OK to close the USB Card Audio "Echo Cancelling Speakerphone Properties".
7. Repeat steps 3 thru 6 for the Recording tab.
8. Select OK to close the Sound menu.

